

# Petroleum potential of Block 9 PSC



**GEOCIENCIAS '2017**  
3 al 7 de abril, La Habana, Cuba

Geociencias Conference  
La Habana, Cuba - April 2017



## *Forward-looking Statements and Resources*

**Summary of information:** This presentation contains general and background information about Melbana Energy's activities current as at the date of the presentation and should not be considered to be comprehensive or to comprise all the information that an investor should consider when making an investment decision. The information is provided in summary form, and should not be considered to be comprehensive or complete.

**Not financial product advice:** This presentation is not financial product, investment advice or a recommendation to acquire securities and has been prepared without taking into account the objectives, financial situation or needs of individuals. Before making an investment decision investors should consider the appropriateness of the information having regard to their own objectives, financial situation and needs, and seek legal, taxation and financial advice appropriate to their jurisdiction and circumstances.

**Disclaimer:** Melbana Energy and its related bodies corporate and each of their respective directors, agents, officers, employees and advisers expressly disclaim, to the maximum extent permitted by law, all liabilities (however caused, including negligence) in respect of, make no representations regarding, and take no responsibility for, any part of this presentation and make no representation or warranty as to the currency, accuracy, reliability or completeness of any information, statements, opinions, conclusions or representations contained in this presentation. In particular, this presentation does not constitute, and shall not be relied upon as, a promise, representation, warranty or guarantee as to the past, present or the future performance of Melbana Energy.

**Future performance:** This presentation contains certain forward-looking statements and opinion. The forward-looking statements, opinion and estimates provided in this presentation are based on assumptions and contingencies which are subject to change without notice, as are statements about market and industry trends, which are based on interpretations of current market conditions. Forward-looking statements, including projections, forecasts and estimates, are provided as a general guide only and should not be relied on as an indication or guarantee of future performance and involve known and unknown risks, uncertainties and other factors, many of which are outside the control of Melbana Energy. Past performance is not necessarily a guide to future performance and no representation or warranty is made as to the likelihood of achievement or reasonableness of any forward looking statements or other forecast.

**Risks:** An investment in Melbana Energy is subject to investment and other known and unknown risks, some of which are beyond the control of Melbana Energy.

**Not an offer:** This presentation is not, and should not be considered as, an offer or an invitation to acquire securities in Melbana Energy or any other financial products and neither this document nor any of its contents will form the basis of any contract or commitment. This presentation is not a prospectus. Offers of securities in Melbana Energy will only be made in places in which, or to persons to whom it would be lawful to make such offers. This presentation must not be disclosed to any other party and does not carry any right of publication. Neither this presentation nor any of its contents may be reproduced or used for any other purpose without the prior written consent of Melbana Energy.

**No Distribution in the US:** This presentation is not an offer of securities for sale in the United States. Any securities to be issued by Melbana Energy have not been and will not be registered under the US Securities Act of 1933, as amended (the "US Securities Act") and may not be offered or sold in the United States absent registration or an exemption from registration under the US Securities Act. No public offer of the securities is being made in the United States and the information contained herein does not constitute an offer of securities for sale in the United States. This presentation is not for distribution directly or indirectly in or into the United States or to US persons.

**Monetary values:** Unless otherwise stated, all dollar values are in Australian dollars (A\$). The information in this presentation remains subject to change without notice.

**No distribution:** Distribution of this presentation may be restricted by law. Persons who come into possession of this presentation should seek advice on and observe any such restrictions. Any failure to comply with such restrictions may constitute a violation of applicable securities laws.

**Contingent and Prospective Resources:** The information in this presentation that relates to Contingent Resources and Prospective Resources for Melbana Energy is based on, and fairly represents, information and supporting documentation compiled by Peter Stickland, the Managing Director and Chief Executive Officer of Melbana Energy. Mr Stickland B.Sc (Hons) has over 25 years of relevant experience, is a member of the European Association of Geoscientists & Engineers and the Petroleum and Exploration Society of Australia, and consents to the publication of the resource assessments contained herein. The Contingent Resource and Prospective Resource estimates are consistent with the definitions of hydrocarbon resources that appear in the Listing Rules. Conversion factors: 6 Bscf gas equals 1 MMboe; 1 bbl condensate equals 1 boe.

# Presentation Overview

- ✓ Exploration History of Block 9
- ✓ Melbana methodology – integration of all data sets
- ✓ Developing an integrated Structural/Stratigraphic model for Block 9  
Relating Play Elements – Trap, Seal, Reservoir
- ✓ New Biostratigraphic control at Marti 5
- ✓ Current Resource Assessment / High-graded Prospects
- ✓ Conclusions & Next steps

# Cuba Block 9 – An Overview

## Block 9 PSC

- 100%\* interest in Block 9 PSC (2,380km<sup>2</sup> or 588,000 acres) located onshore in Cuba
- 25 year term (awarded in 2015)
- Exploration sub periods:
  - 1 (Sept 2015 to Nov 2017) – studies and seismic reprocessing – largely completed
  - 2 (Nov 2017 to Nov 2019) – 200km 2D seismic acquisition

## Block 9 Prospectivity

- Lightly explored but contains natural oil seeps and has several small discoveries
- Along trend from Varadero oil field >11 billion barrels (CUPET pers. com)
- Potential for Varadero type structures in Block 9
- Adjacent to Sherritt International's producing area (~14,700 bopd)



Low lying farmland



Sealed Roads



Modern drilling rig in Cuba

\* Subject to Petro Australis conditional option to back in for 40%, no later than Sept 2017. See announcement dated 3 Sept 2015



# Brief Exploration History of Block 9

***Block 9 has a mature and working Petroleum System evidenced by the numerous natural oil seeps and several small oil discoveries***

## Pre 1959:

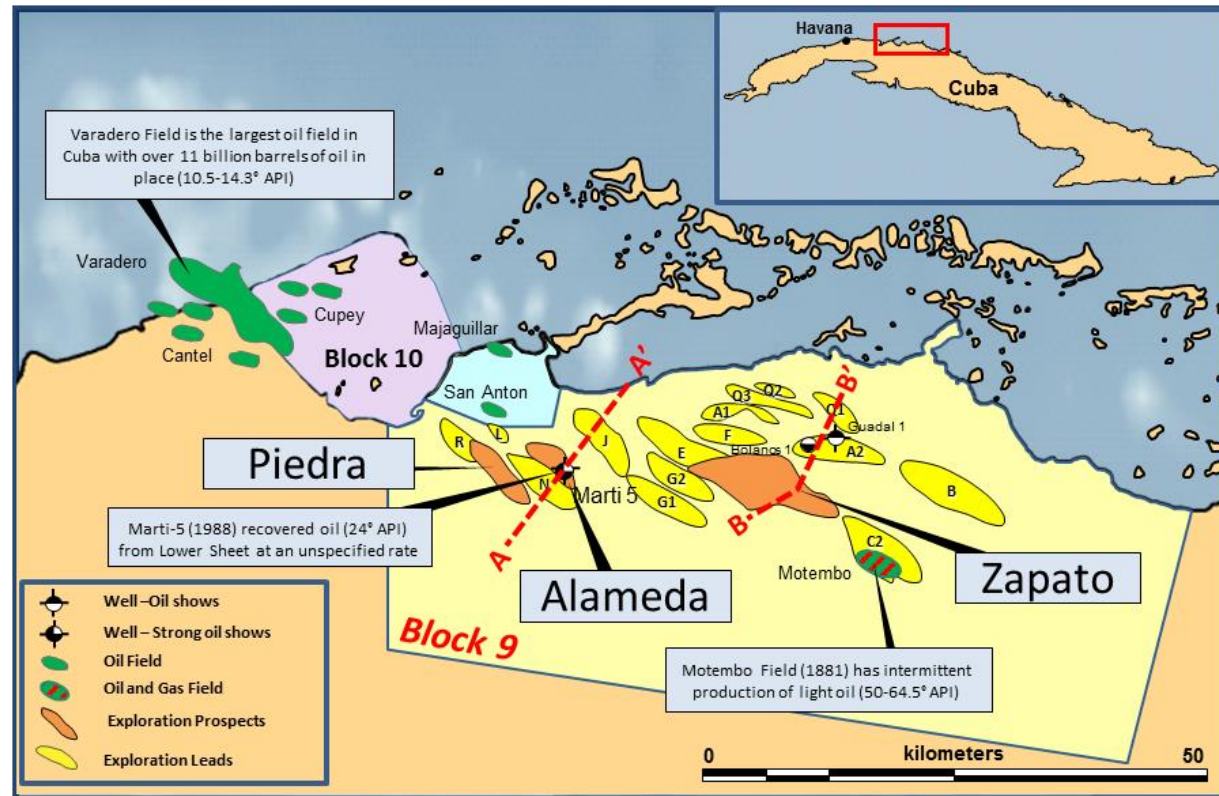
- Asphalt mined from surface deposits
- Motembo discovery – light oil, shallow, produced 5+ mmstb
- Numerous other shallow wells, many with oil shows/recoveries

## 1959-1991:

- Some early seismic acquisition
- Marti 2 in 1973, and Marti 5 in 1988 both recovered oil on test
- Number of other wells drilled with oil recoveries (some located pre-seismic)

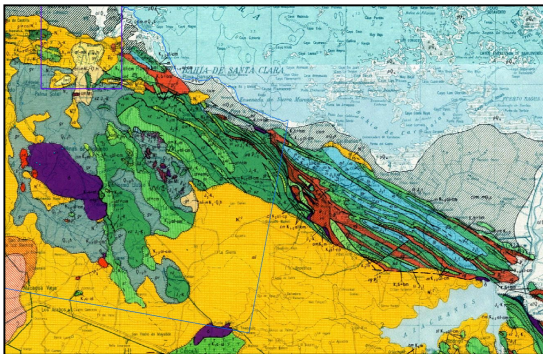
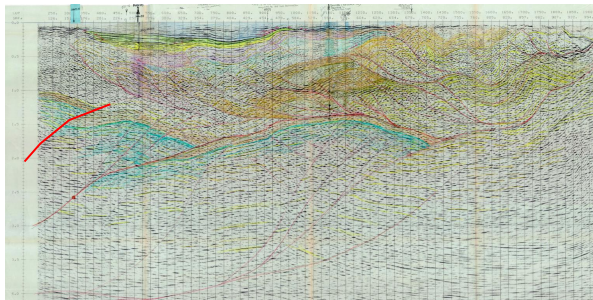
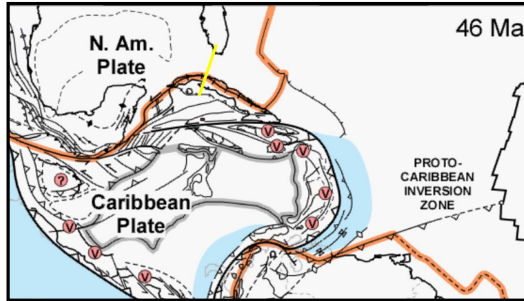
## 1991-2006:

- First international PSC for Block 9
- Shallow-moderate drilling depths, but results in two producing discoveries (Majaguillar and San Anton - reserved for CUPET)

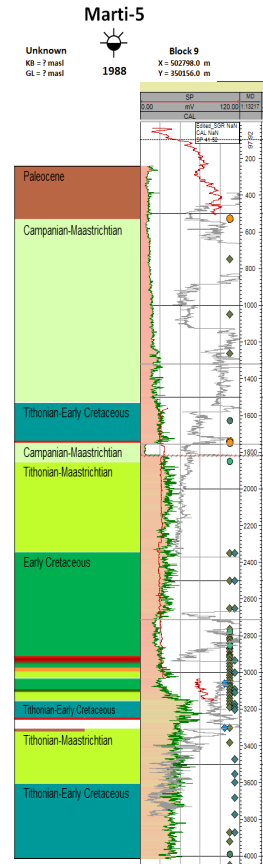


# Melbana Methodology – Integration is the Key!

**All datasets are reviewed - results combined into a fully integrated model**



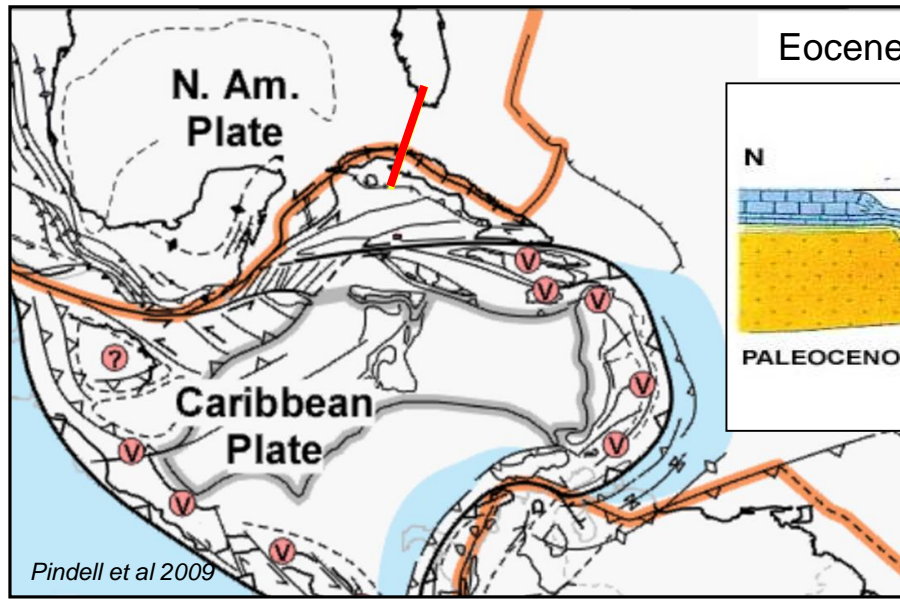
- Plate Tectonic/Kinematic Models
  - Stress/Driving Forces
- Outcrop data – regional contact attitudes
- Well data
  - Lithologic Descriptions
  - Dip data and interval thickness control
  - Chronostratigraphy - Biostratigraphy
- Seismic data – Dip Panel interpretation
  - Strain- deformation / structural elements
- Cross section construction – integration
  - Restoration/Balancing checking plausibility



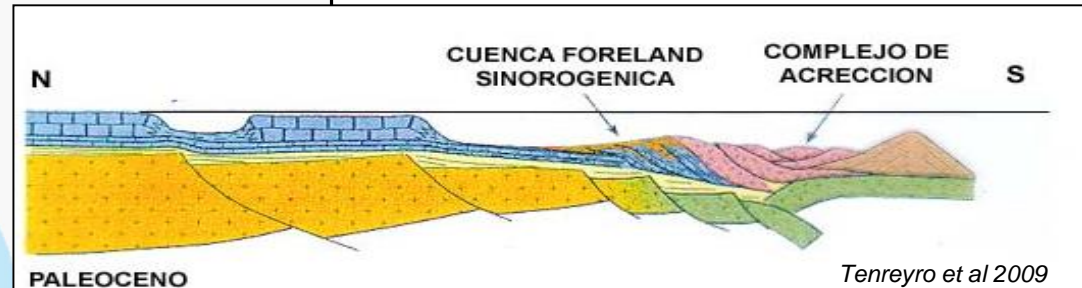


# Caribbean Plate Kinematic Summary

*Early work by Pindell and Tenreyro have contributed the following summaries*



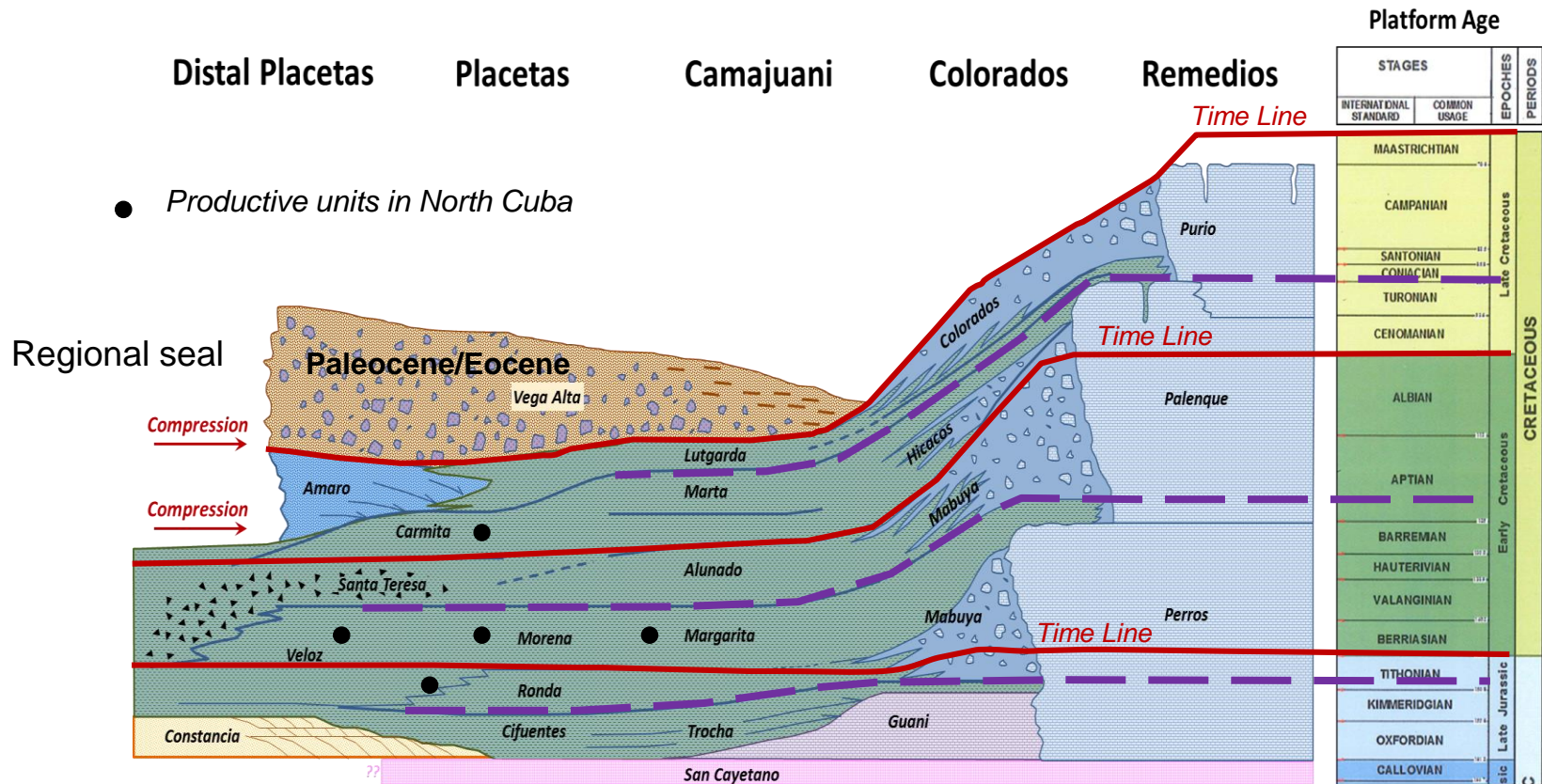
Eocene 46 Ma



- Much debate about Caribbean plate origins *Pacific v insitu*
- The greater Antilles Arc system is clearly rolling back towards the NE and East
- For our analyses, assume that a lower Plate proto GOM Jurassic crust is subducted beneath the converging upper plate Arc system
- This Arc system contains Ophiolites with SSZ style fore-arc affinities

# Block 9 : Litho-Stratigraphy / Chronostratigraphy

- Review of Block 9 stratigraphy on a chrono-stratigraphic basis to assist correlations and structural restoration efforts
- Requires accurate and more complete Biostratigraphy and lithological descriptions with thickness information



*Large second order flooding events = regional structural detachments*



# Kinematic Evolution – Arc / Continent collision

**Late Cretaceous**

**Upper Plate**

Distal Placetas Placetas Camajuani Remedios

**Lower Plate**

**Upper Plate**

Distal Placetas  
DISTAL PLACETAS Placetas Camajuani Remedios

**Lower Plate**

**Paleocene**

**Upper Plate**

Distal Placetas  
PLACETAS Camajuani Remedios

**Lower Plate**

**Eocene**

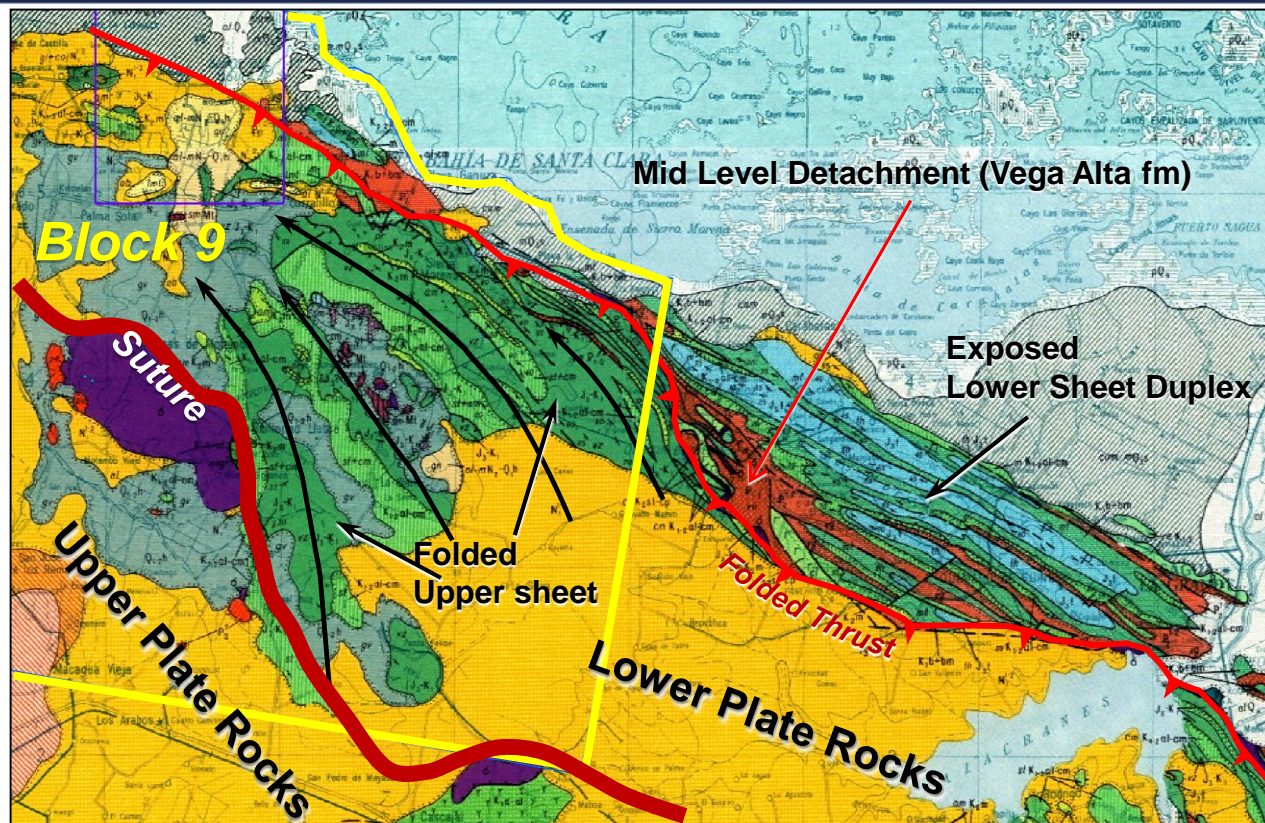
Lower plate Jurassic crust of the GOM is subducted under Upper Plate Arc

Lower Plate Remedios carbonate platform / apron compressed into the North Cuban fold and thrust belt.

## Multiple phases of emplacement

1. Distal Placetas facies is emplaced onto the outer parts of the lower plate
2. More Placetas is duplexed from the Lower Sheet under the emplaced sheet duplicating the most distal facies belts to form 2 upper sheets
3. Initial Ophiolite slab emplacement
4. Successive horses are duplexed from the outer edge of the lower plate forming antiformal stacks refolding Upper sheets
5. Ophiolite slab overthrust/exposure
6. Back thrusting of upper sheet driven by blind lower sheet wedge emplacement

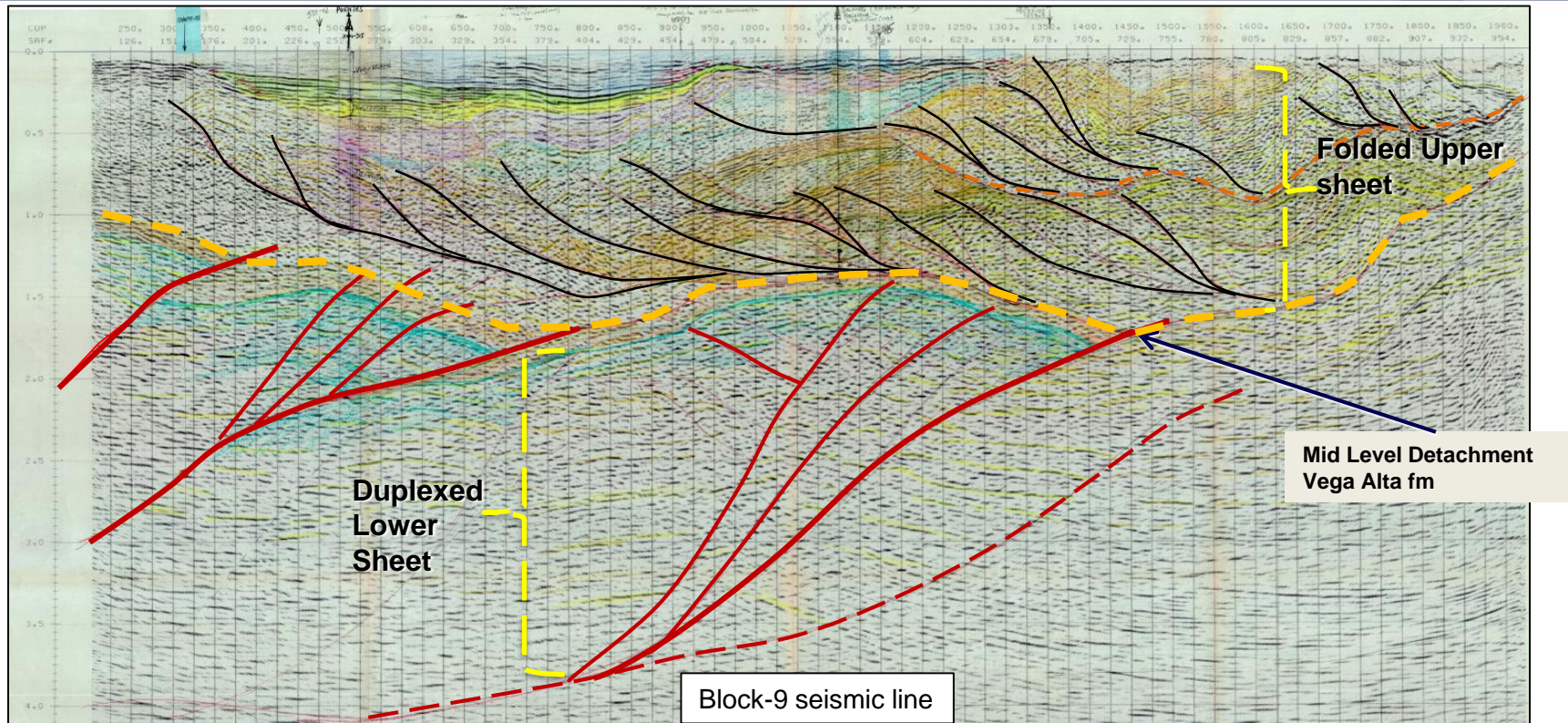
# Outcrop Expression of Structural Elements



- Suture between Upper Plate rocks (Arc complex / Ophiolites) and the Lower Plate Remedios succession seen in outcrop
- Lower Plate composed of an Upper sheet (distal carbonates) folded by a duplexed Lower Sheet
- Thrusted contact between the Upper and Lower sheet defines the mid level detachment.
  - The Lower Sheet is an exhumed duplex involving proximal Jurassic to early Cretaceous
  - The Upper Sheet was emplaced on top of the Lower Sheet during early stages.
  - Later structuring of the Lower Sheet refolded the Upper Sheet and the thrust contact



# Structural Interpretation of existing seismic data



Fault Bend Folds & Fault Propagation Folds in dip panels on Block 9 seismic data  
The Mid level detachment separates the forward (northerly) vergence in the Lower Sheet from dominantly backthrusting in the Upper Sheet

- *Blind wedges and triangle zones (commonly seen at the leading edge of foldbelts) are observed on several seismic lines in Block 9*
- *Lower sheet duplexing driving backthrust deformation in the Upper Sheet is observed on many lines*



# Well log Evidence: New Biostratigraphic Study at Marti 5

The mid level detachment is seen at Majaguillar 1 by CUPET and now also at Marti 5

## Majaguillar 1

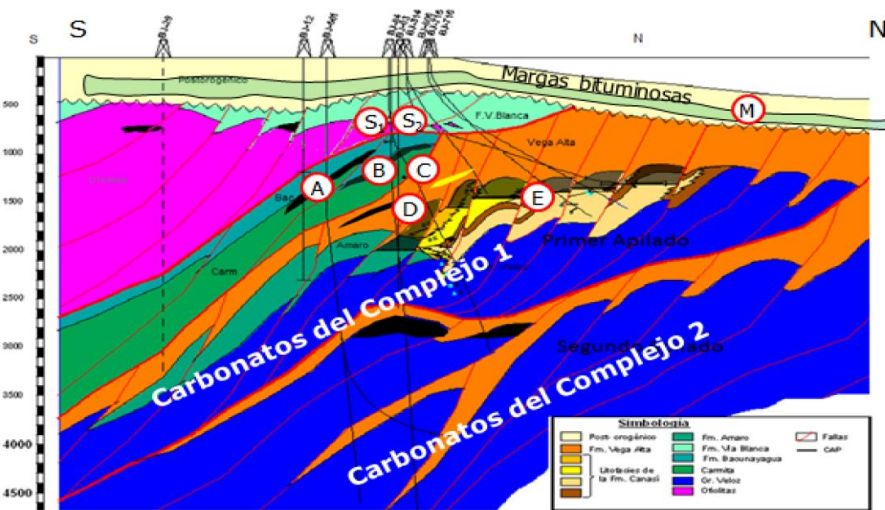
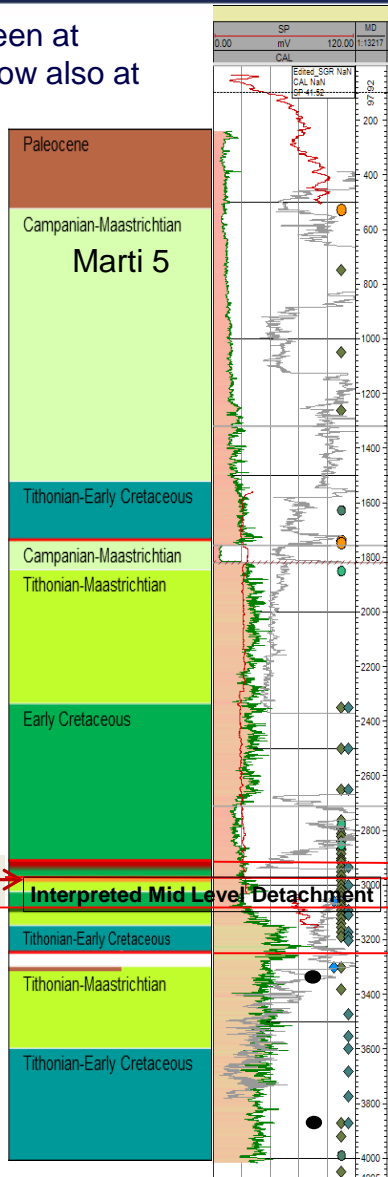
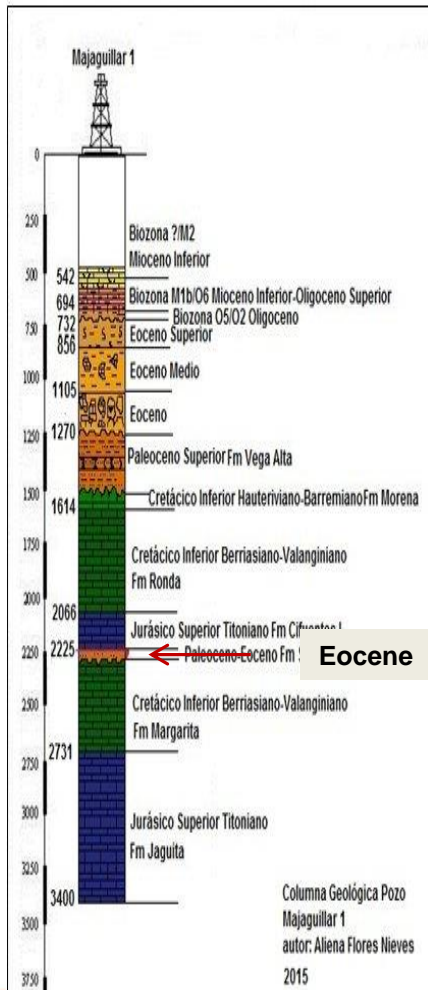
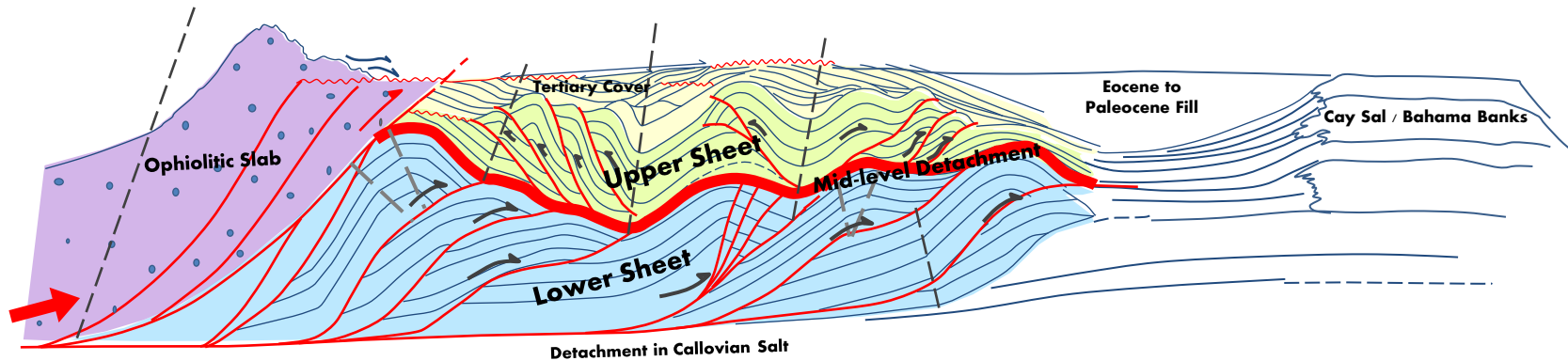


Figura 1. Corte geológico del yacimiento de Boca de Jaruco.  
After Afanasiev, Yudin & Azimov, Cuban Geosciencias 2015

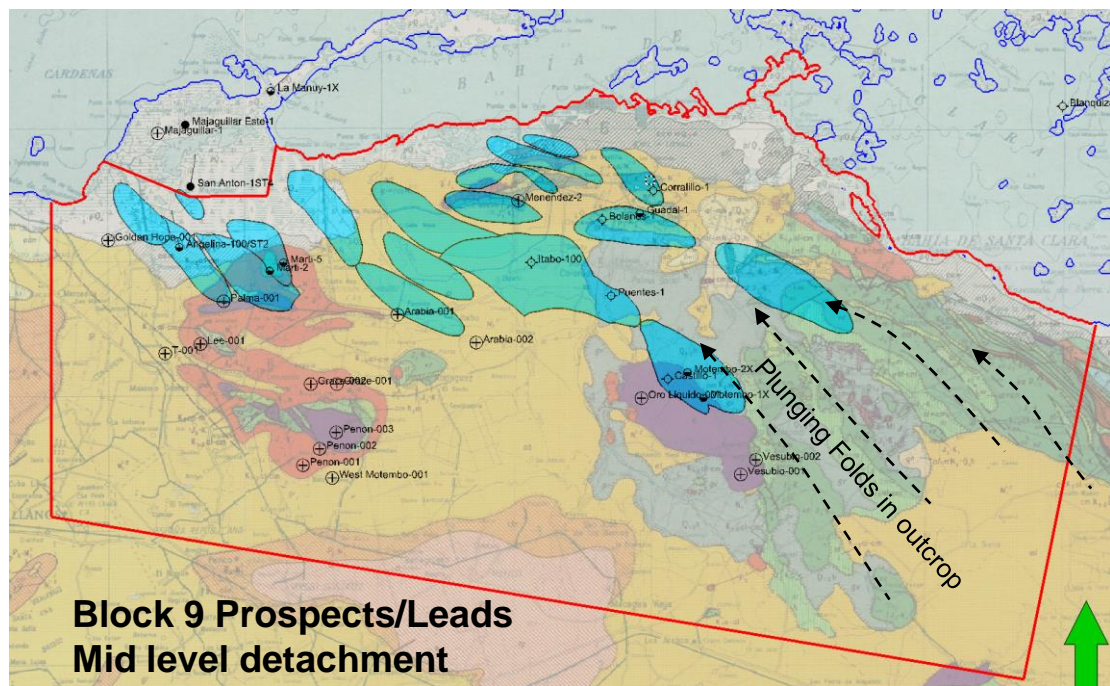
- Mid level detachment separating upper / lower sheets portrayed in many CUPET field diagrams
- Seen here in Majaguillar 1 north of Block 9
- Mid level detachment is seen on seismic over Marti 5
- New study - dense Biostratigraphic sampling over this interval identified an Eocene condensed interval not previously described
- Hence a topseal for the deeper sheet duplex play and the seal for the oil recoveries in Marti 5
- More wells being evaluated to strengthen the model

# Developing a Block 9 Structural Model

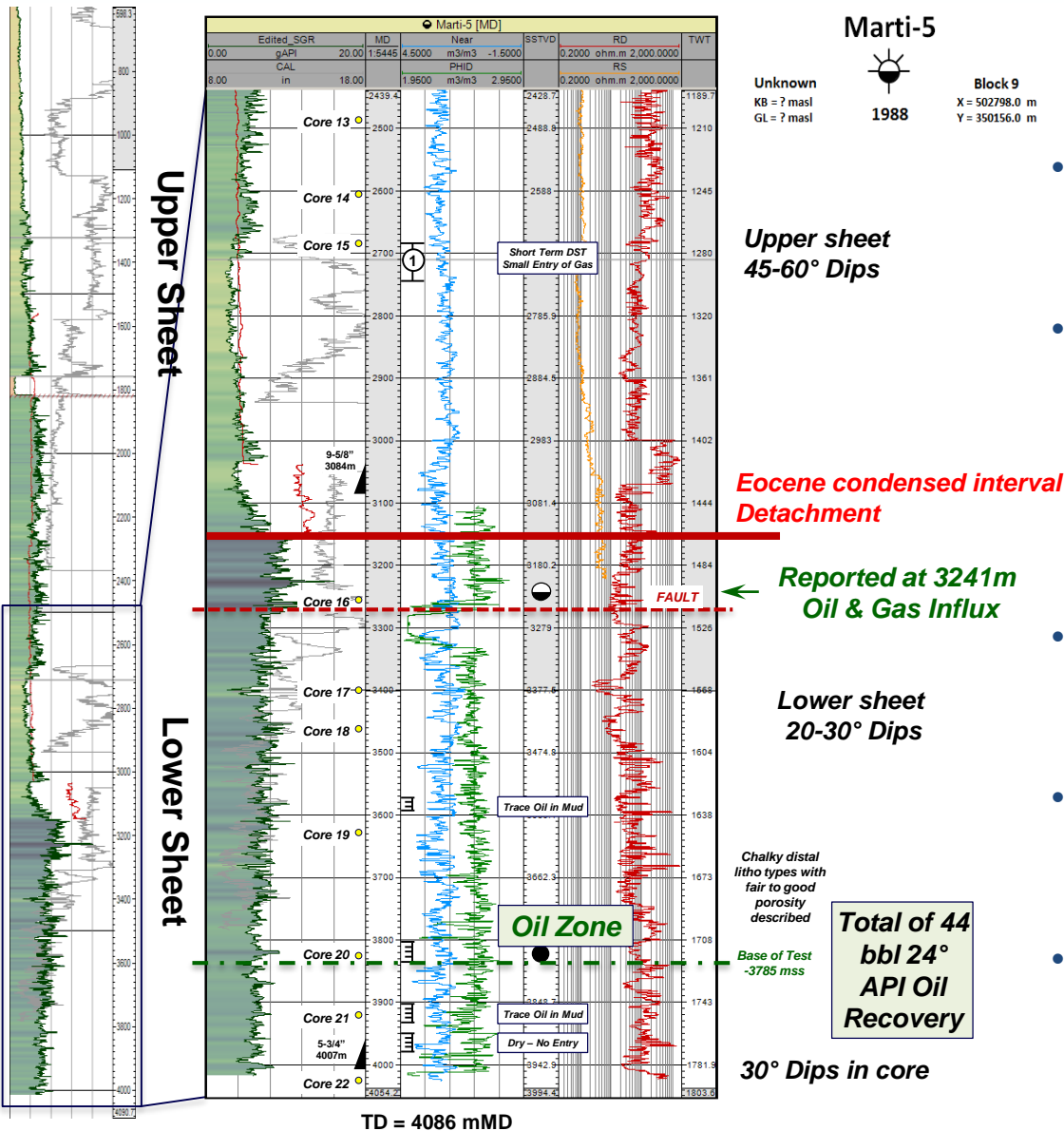
Integrating all the general observations from data and information gained from Cupet experts



- **Upper Sheet**, highly imbricated and back-thrusted trains of fault propagation folds composed of distal Placetas facies of Jurassic and Cretaceous age.
  - composed of at least 2 component sheets
- **Lower Sheet**: A thicker sheet of more proximal carbonate facies. Simply deformed into large antiformal duplex stacks mappable on existing seismic.
- **Mid level Detachment** - Vega Alta Fm Olistostromic sea floor facies - topseal for the deeper sheet structures.



# Marti 5 – Lower Sheet Oil Recoveries



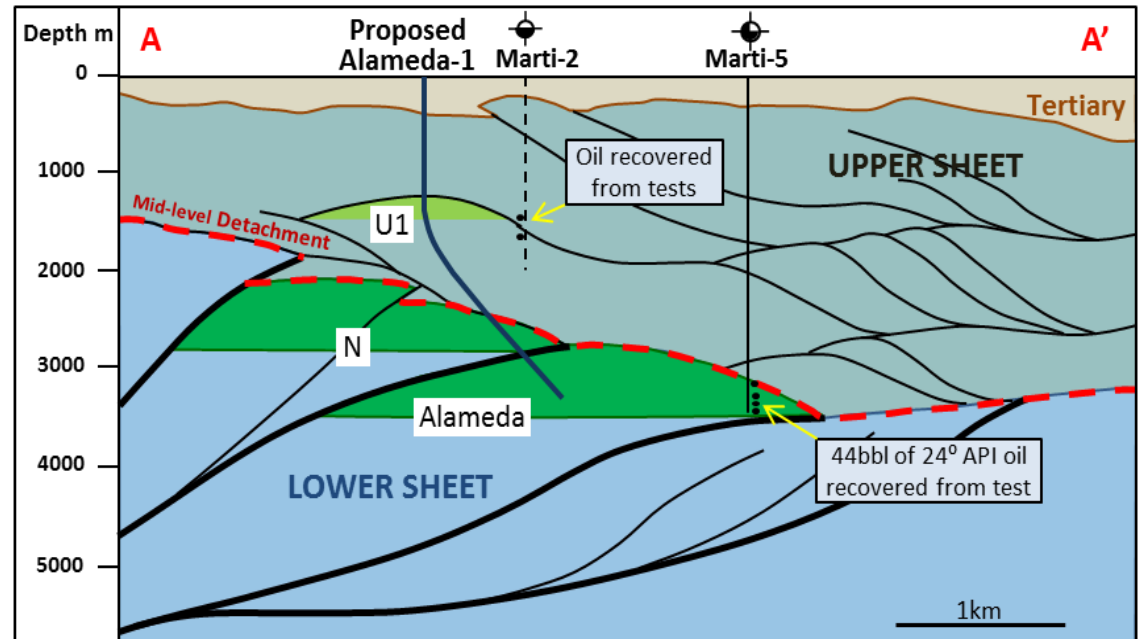
- Eocene condensed interval topseal defined at the mid level detachment
- Oil shows seen over 850m interval in Lower Sheet under the condensed interval – including a reported oil influx under the detachment
- Marti-5 dips of ~45-60° noted within core in the Upper Sheet
- Dips flatten to 20-30° below the Vega Alta in the Lower Sheet
- Testing the lower oil zone recovered 44 barrels of 24° API oil from deep within the lower sheet.



# Alameda Prospect: Following up oil recoveries at Marti 5 and 2

## High impact prospect, currently designing well for potential 2018 drilling

- Large antiformal duplex stack behind Marti 5 forelimb setting
- Primary objective in depth range from 3,000 to 3,700 metres
- Following up oil recoveries from Marti 2 in the upper sheet at U1
- Currently designing Alameda well to intersect several objective intervals for drilling early in 2018



### Alameda Recoverable Prospective Resources (MMstb 100% share)

Objective	CoS*	Low	Best	High	Mean
U1	17%	2	25	93	38
N	22%	4	41	129	56
Alameda	32%	3	65	214	91

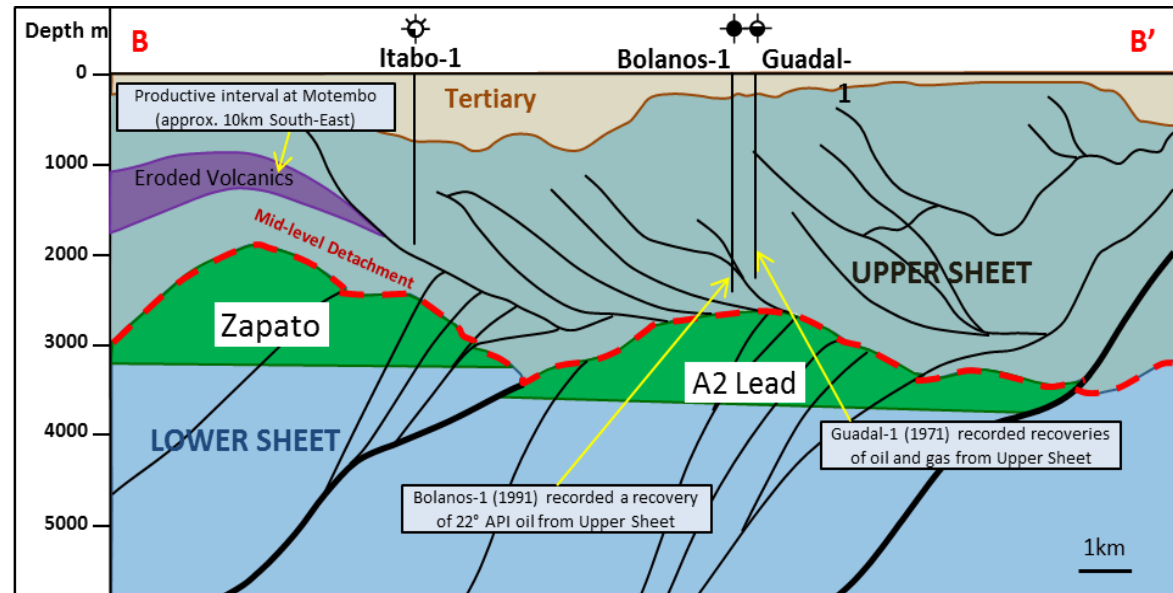
\*Chance of Success

**Prospective Resources Cautionary Statement:** The estimated quantities of petroleum that may potentially be recovered by the application of a future development project(s) relate to undiscovered accumulations. These estimates have both an associated risk of discovery and a risk of development. Future exploration appraisal and evaluation is required to determine the existence of a significant quantity of potentially moveable hydrocarbons.

# Central Area: High Potential A2 and C1 Leads

## Follow up Potential – large structures with Billion barrel in place exploration potential

- A2 is a large structure supported by two nearby shallow wells that recovered oil from the upper sheet above the deeper A2 lower sheet target
- Zapato is the leading edge of a large antiformal duplex stack only 13 kms along strike from the Motembo field
- Motembo oil field has produced very light oil 50+ API since 1880's.
- Also preparing the Zapato lead for potential drilling in 2018



**Prospective Resources Cautionary Statement:** The estimated quantities of petroleum that may potentially be recovered by the application of a future development project(s) relate to undiscovered accumulations. These estimates have both an associated risk of discovery and a risk of development. Future exploration appraisal and evaluation is required to determine the existence of a significant quantity of potentially moveable hydrocarbons.

### Prospective Resource (100%, MMstb)

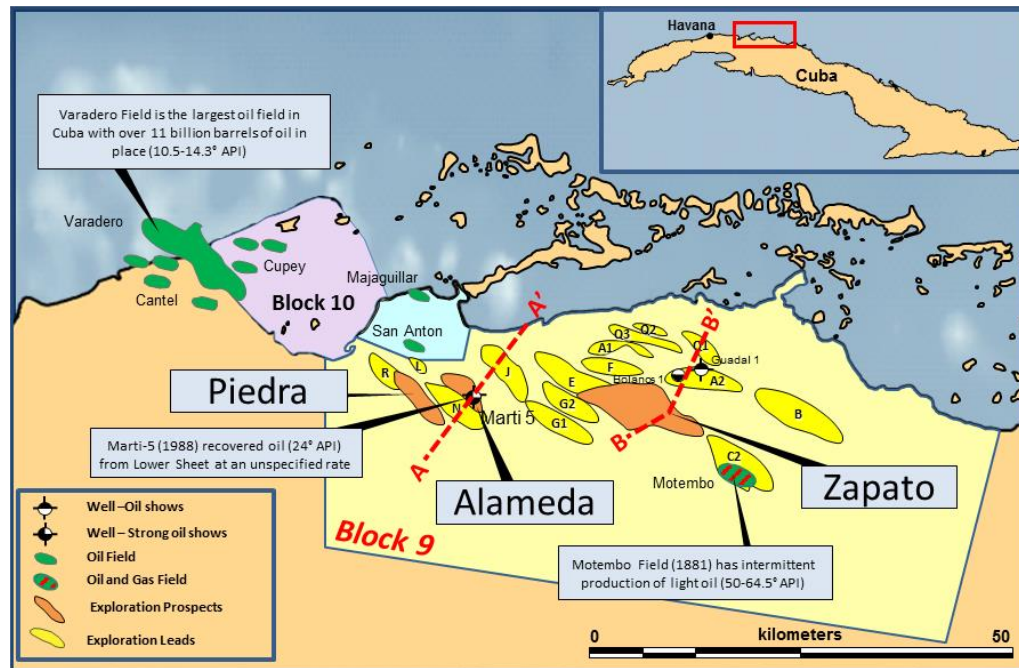
	CoS*	Low	Best	High	Mean
A2 Lead	21%	9	69	213	93
Zapato Lead	25%	5	71	297	118

\*Chance of Success

# Cuba Block 9 – Resource Assessment

## Large onshore acreage position along strike from multi Billion Barrel Varadero field

- Exploration potential of over 12 billion barrels of oil-in-place and Prospective Resources of ~600 million barrels (unrisked Best Estimate, 100% basis)
- 18 individual leads identified in conventional “Lower Sheet Play”
- Depths between 2,000 and 4,000 metres
- High potential prospect Alameda and Zapato identified close to historical oil recoveries
- Recoverable volumes conservatively estimated using the historical 5% recovery factor for nearby Cuban fields
- Potential for higher quality light crude oil suggested by historical oil recoveries



Block 9 Exploration Potential	Low	Best	High	Mean
	MMstb	MMstb	MMstb	MMstb
Oil-in-Place (unrisked, 100%)	1,141	12,243	42,300	17,759
Prospective Resources (recoverable, unrisked, 100%)	57	612	2115	888

**Prospective Resources Cautionary Statement** - The estimated quantities of petroleum that may potentially be recovered by the application of a future development project(s) relate to undiscovered accumulations. These estimates have both an associated risk of discovery and a risk of development. Future exploration appraisal and evaluation is required to determine the existence of a significant quantity of potentially moveable hydrocarbons.



# Conclusion and Next steps

## Conclusions:

- Built an integrated model relating the key play parameters of Trap, Seal and Reservoir.
- Identified large structures in Block 9 similar to proven fields on trend (Varadero)
- Enabled multi-billion barrel (ooip) exploration potential of the lower sheet to be characterized
- Matured several prospects for accelerated drilling

## Next Steps

- Some areas of Block 9 still have no seismic coverage – unknown potential
- Ongoing assessment may add further potential
- Additional secondary objectives in Upper Sheet and Shallow Tertiary plays
- Preparing two well proposals targeting lower sheet prospects for potential drilling in early 2018
- Undertake farm-out process seeking suitably qualified partners to help pursue the world class exploration potential of Block 9 PSC