



MEO Australia Limited

ABN 43 066 447 952

Level 17
500 Collins Street
Melbourne Victoria 3000 Australia

Tel: (+61 3) 9614 0430
Fax: (+61 3) 9614 0660
Email: admin@meoaustralia.com.au
Website: www.meoaustralia.com.au

ASX AND MEDIA RELEASE

BLACKWOOD-1 WELL WEEKLY DRILLING REPORT – No 4

Key Points:

- **Drilled 12¼ inch hole to 3135m**
- **Pulled out of hole to change bit to drill Plover formation**
- **Currently running a new 12¼ inch drilling bit into hole**
- **Approximately 20m to be drilled to target Plover sandstones**

MELBOURNE, AUSTRALIA (February 25, 2008) -- MEO Australia Limited (ASX: MEO) submits this drilling report for the period ending 0900 hours February 25, 2008. Blackwood-1 was spudded at 1830 hours (ACST) on February 1, 2008 in Exploration Permit NT/P68.

The rig has drilled the 12¼ inch hole to a depth of 3135m (approximately 20m above the target Plover sandstones) and is currently running back into the hole with a new 12¼ inch bit to drill the Plover sandstones.

The pre-drill estimated depth of the Top Plover Formation target reservoir of the Blackwood structure was 3351m. Blackwood-1 has confirmed that each of the formation tops in the deeper part of the well is approximately 200m high to original prognosis. The revised Top Plover formation depth is 3153mMD. MEO expects to drill into the Plover sandstones later today.

Blackwood-1 is being drilled by Seadrill's West Atlas jack-up rig. The Blackwood-1 wildcat well is being 100% funded as a sole risk operation by MEO. The well is designed as a vertical well to penetrate, log and recover hydrocarbon samples in the Plover Formation of the Blackwood structure.

The participants in the Blackwood-1 well are:

TSP Arafura Petroleum Pty Ltd (MEO subsidiary)	50%
Oz-Exoil Pty Ltd (MEO subsidiary)	50%

C.R. Hart, Managing Director
MEO Australia Limited
NT/P68 Operator

BLACKWOOD-1 WELL

DETAILS

Licence:	NT/P68
Operator:	MEO Australia Limited
Rig:	Seadrill West Atlas jack-up
Surface location:	Latitude: 10 deg 12 min 37.753 sec Longitude: 128 deg 46 min 48.539 sec Datum: GDA94
Seawater Depth:	60 m LAT
Spud Date:	February 1, 2008
Target Strata:	Plover Formation sandstones
Total Depth:	Revised: 3256 metres (MDRT). (MD - measured depth below the rig's rotary table - RT)
Primary Target Depth:	Revised Top Plover Fm 3153 metres (MDRT)
Designated Authority:	Northern Territory Department of Primary Industry, Fisheries and Mines (DPIFM)
Reservoir Objectives:	Plover Formation: Determine the presence or otherwise of hydrocarbons (gas/condensate); reservoir properties including intergranular porosity and permeability; the presence of any fracture system to contribute to productivity and the level of CO₂ and H₂S in the gas.
Production Objectives:	In a success case, the full Plover Formation will be drilled to the interpreted structural spill point to confirm a gas-water-contact. While no production tests are planned for the Plover Formation, a full log suite will be acquired including image logs, rotary side-wall core samples obtained, and hydrocarbon samples and pore pressure data will be recovered by Modular Dynamics Testing (MDT) testing.
Well Design:	Blackwood-1 is a vertical well. The well design is to drill a 26" hole to 465m and set a 20" conductor. A 13³/₈" intermediate casing will be set in a 17¹/₂" hole drilled to 1265m. Drill a 12¹/₄" vertical hole to revised TD of 3256m, log and MDT test. 9⁵/₈" backup casing string is available to drill 8¹/₂" hole to TD in the Plover Formation if the pore pressures are lower than anticipated requiring a reduction in mud weights while drilling the Plover Formation.

Blackwood-1 is being planned as a high temperature (HT) well, based on the conditions encountered at the nearby offset wells, Heron-1 & Heron-2. The HT criteria being:

- Maximum anticipated bottom-hole temperatures exceeds 150°C

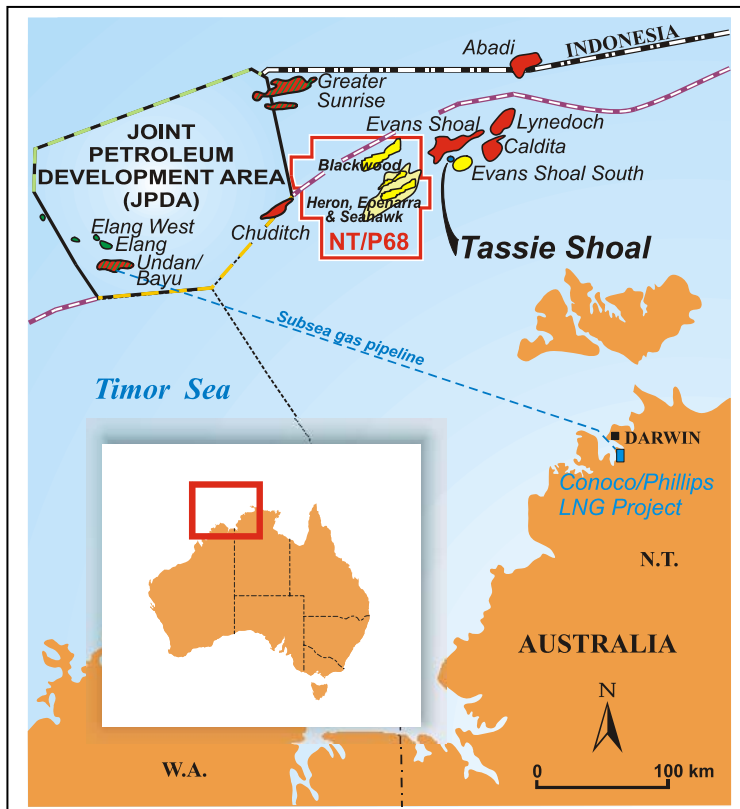
MEO Pre-Drill Estimates

Target Reservoir	Undiscovered Gas-in-Place	Prospective Recoverable Resource
Blackwood: <u>mid case</u> Plover Formation	1461 Bcf	1031 Bcf
Blackwood: <u>high case</u> Plover Formation	2572 Bcf	1816 Bcf

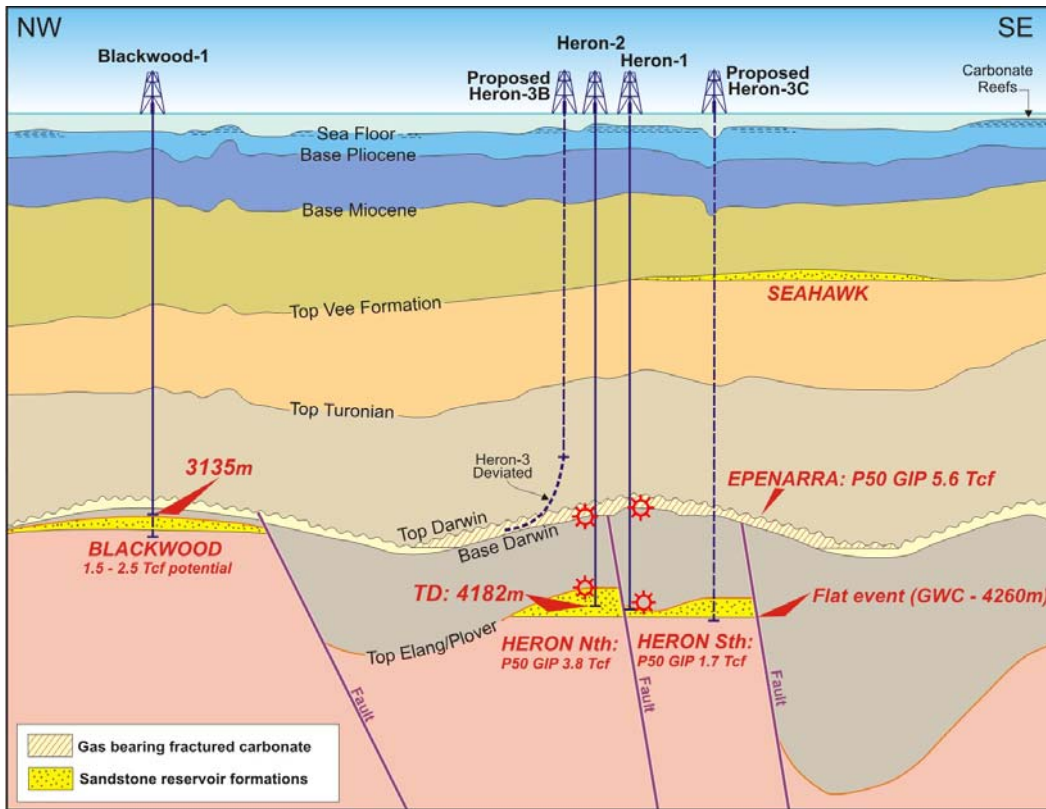
Summary of potential

Blackwood-1 well is being drilled to test the Blackwood Prospect targeting Middle Plover sandstone reservoirs on a northeast – southwest trending tilted fault block at the hingeline between the Sahul Platform and the Malita Graben. The Blackwood Prospect at Top Plover Formation appears to be a tilted fault block closure located immediately northwest of the Wonarah-1 well (Shell -1997). The areal relief on the closure is approximately 115sq km and a vertical relief of 145m. MEO has interpreted the available 2D seismic data over the Blackwood Prospect incorporating existing 2D data acquired by Shell in 1996 and the new Blackwood 2D seismic data acquired in 2006 with improved the depth conversion by using the seismic PSDM velocities from tomographic inversion of seismic data. An independent assessment of risk indicates the probability of geological success at 32%.

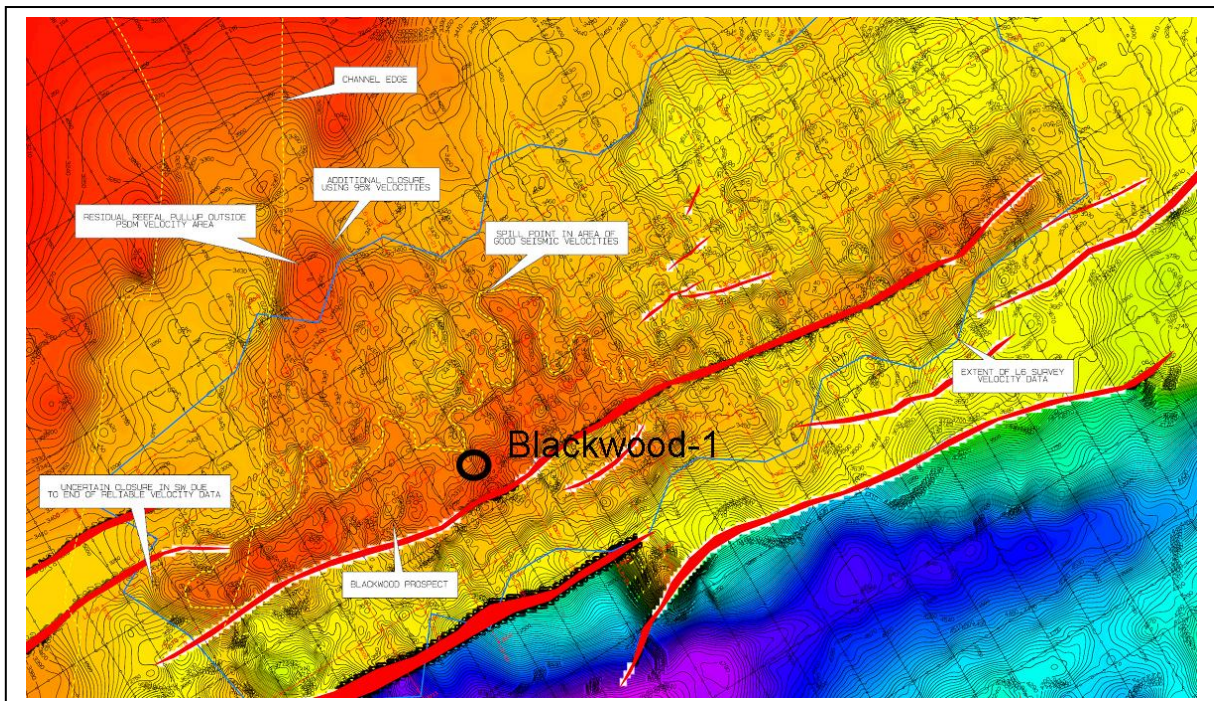
NT/P68 Permit Location showing proximity to Tassie Shoal (site of environmentally approved LNG and methanol production projects)



Schematic showing target horizons and Heron-2 and Blackwood-1 well locations



Plover Formation depth map over Blackwood and well location



WELL NAME: Blackwood-1
 WELL TYPE: Exploration
 WELL AREA: NT/P68, Bonaparte Basin
 RIG: Seadrill, West Atlas

MD (RT) m	STRATIGRAPHY TOPS MDRT	
250	96m	Puffin Fm
500		
750	617m	
1000		
1250	997m	
	1106m	
	1216m	
	1247m	
1500	1385m	
1750	1515m	
2000		
2250	2050m	Wangarlu Fm
2500		
2750		
3000		
3250		
	3103m	Darwin, E. Shoals/ Plover Fm
	3123m	
	3133m	
	3153m	
3500	TD 3256m Success	

Blackwood-1 ST1 Time - Depth Curve

Updated to 09:00hrs 25/02/2008

Commence Operation: 22:00hrs 29th Jan 2008
 Spud Blackwood-1: 18:30hrs 1st Feb 2008

