



MEOAustralia

energy for the future

Presentation Disclaimer

This presentation contains certain forward-looking statements that have been based on current expectations about future acts, events and circumstances. These forward-looking statements are, however, subject to risks, uncertainties and assumptions that could cause those acts, events and circumstances to differ materially from the expectations described in such forward-looking statements.

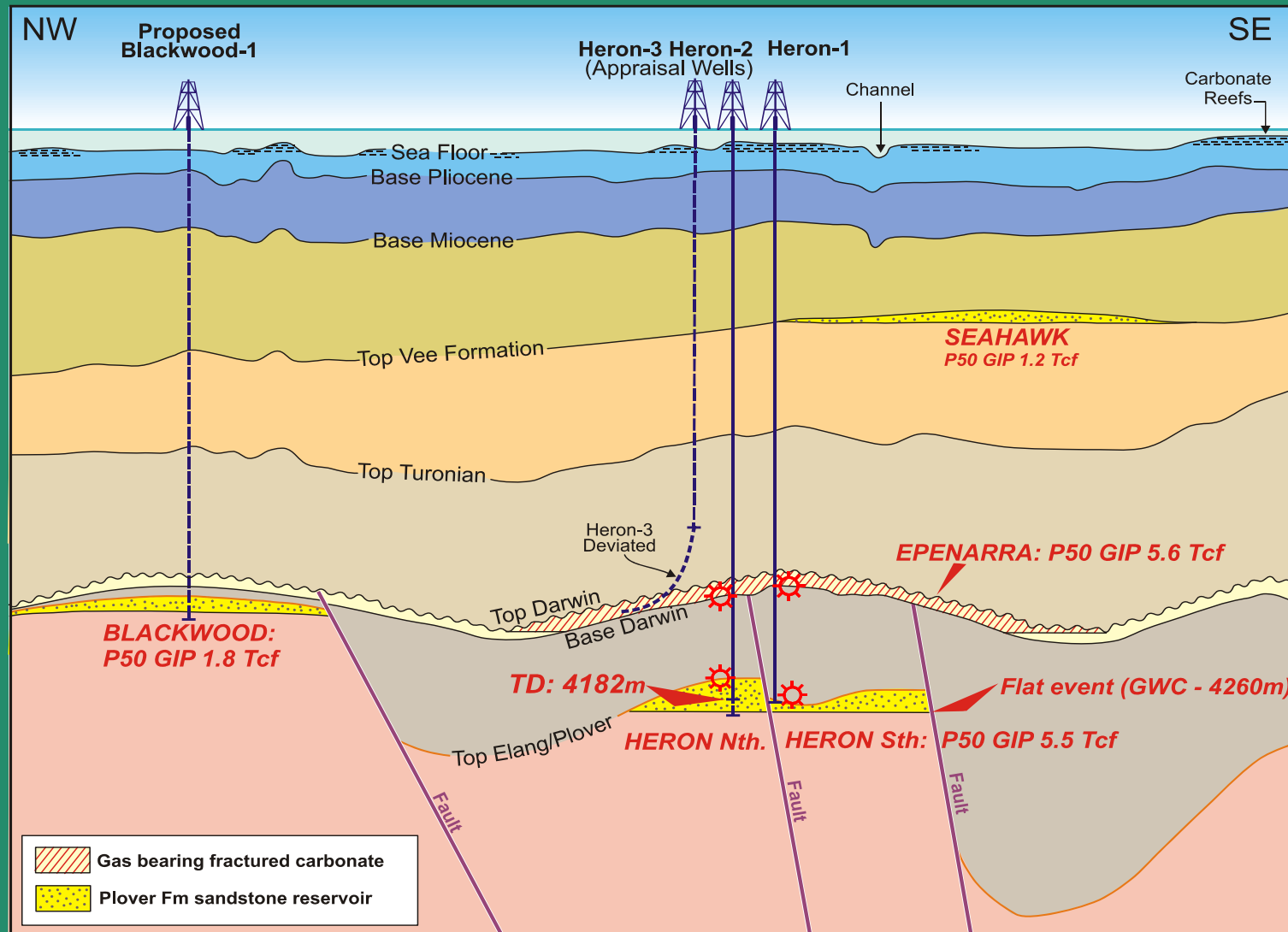
These factors include, among other things, commercial and other risks associated with estimation of potential hydrocarbon resources, the meeting of objectives and other investment considerations, as well as other matters not yet known to the Company or not currently considered material by the Company.

MEO Australia accepts no responsibility to update any person regarding any error or omission or change in the information in this presentation or any other information made available to a person or any obligation to furnish the person with further information.

Investor Update – January 2008

Heron-2 is both appraisal & exploration

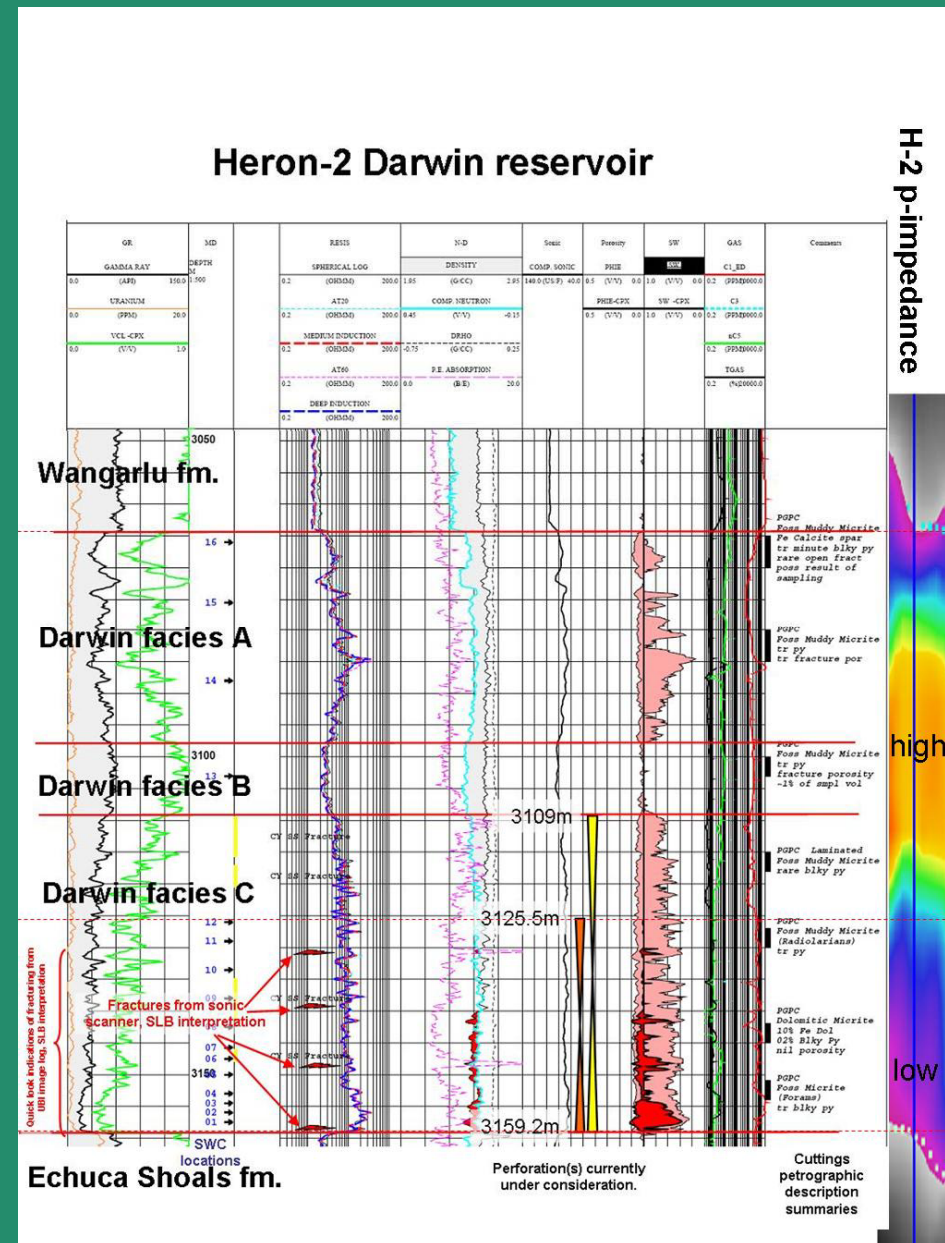
Gas saturation in both Epenarra & Heron North



Epenarra Darwin Fm

- Facies C: 3108m – 3159m
- Full log suite and sidewall cores acquired
- Gas saturation, wet gas fingerprint
- No CO₂ detected in mud gas
- Sonic Scans confirm open fractures
- Good porosity & inferred fracture permeability

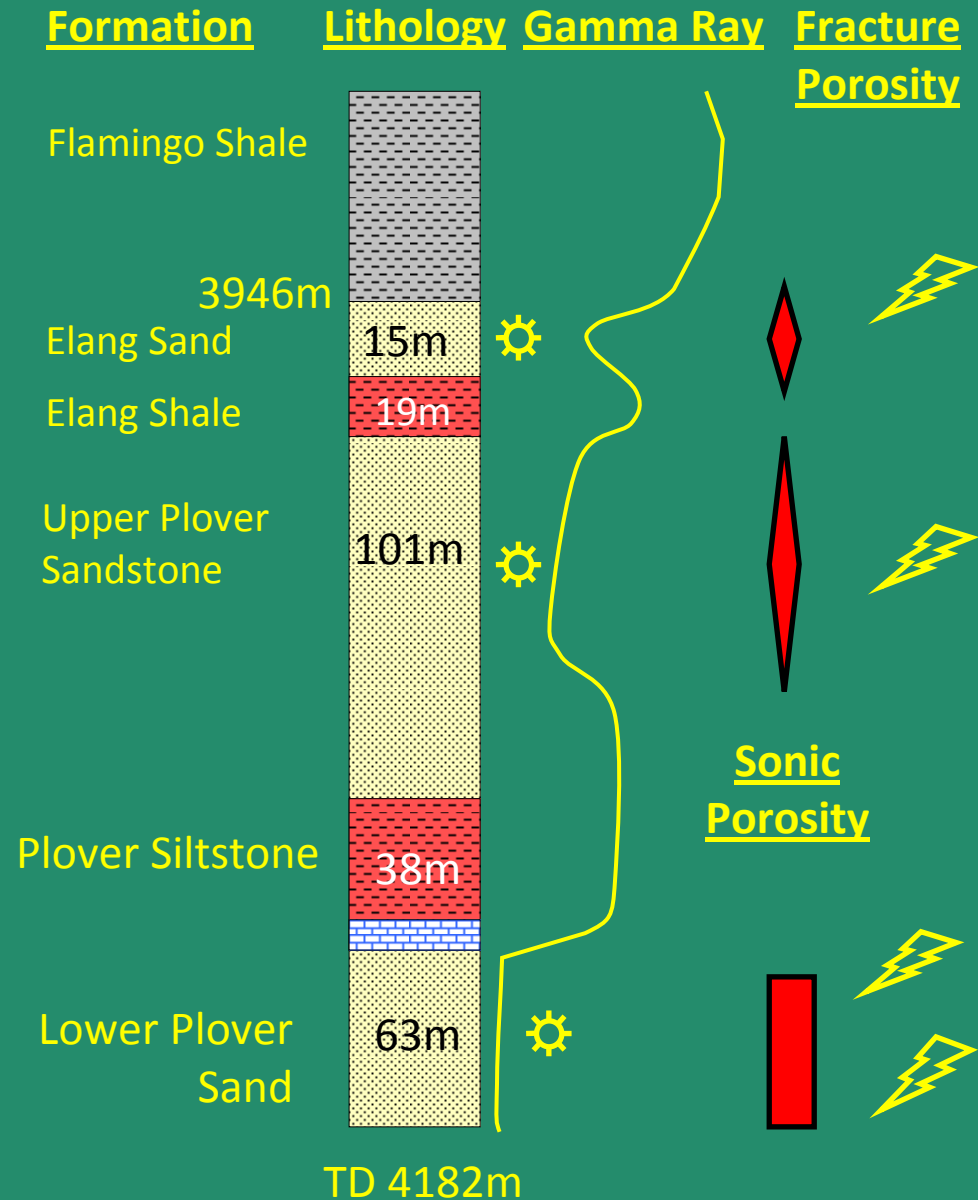
Production test to be conducted this week



Heron Nth Plover Fm

- Gross sand column 164m
- Full log suite acquired
- Gas saturation, wet gas fingerprint
- No CO₂ detected in mud gas
- Good porosity & inferred fracture permeability

Production test undertaken but only Elang Fm contributed ~6 MMscf/d because of blockages in well sealing off Plover Fm



Heron-2 – What's new?

- Darwin Fm is exactly what was expected and we test the flow this week to confirm gas quality and a modest flow rate (~5 MMscf/d in a vertical well is fine as this is expected to increase ~10 times in a horizontal production well)
- Elang should have had poor porosity and no flow. It flowed at ~6 MMscf/d, indicating that the Plover Fm should produce at this depth
- Mud logs through the Elang Fm indicated dry gas and high CO₂
- The actual gas on test was dry & high in CO₂
- Plover gas was expected to be dry gas with high CO₂. The mud logs indicate wet gas low in CO₂
- Testing is yet to confirm the accuracy of the mud logs through the Plover



Summary

- Securing gas supply – NT/P68
 - Heron-2 confirms two gas bearing horizons, the first has shown capacity to flow and the second is about to be tested
 - Heron North Plover must be re-drilled as dedicated appraisal well so that the Plover is drilled in an 8½ inch hole
- 3D acquisition and reprocessing in strategic Northwest Shelf permits advancing
- MEO continues to develop globally competitive GTL projects with robust economics
- MEO remains on-track to becoming a substantial integrated upstream company

